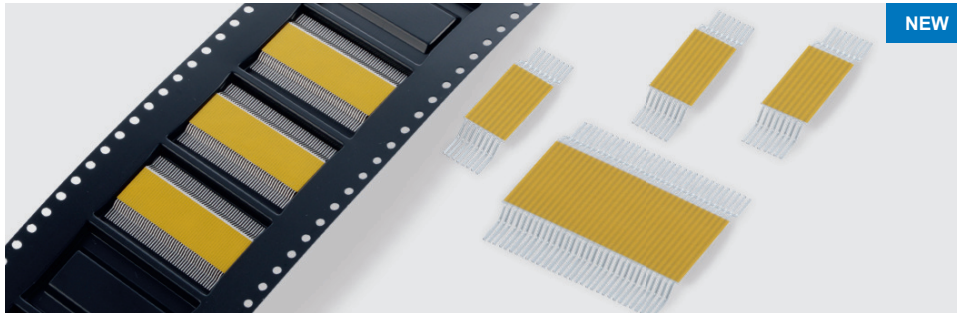


# PANTA<sup>®</sup> SMD 0,50 mm pitch



PANTA<sup>®</sup> SMD-JUMPER in pitch 0,5 mm are used as a high density flexible board connection for the usage on PCB in sandwich-configuration or for electronic connections from PCB's to various assembly positions.

## BENEFITS

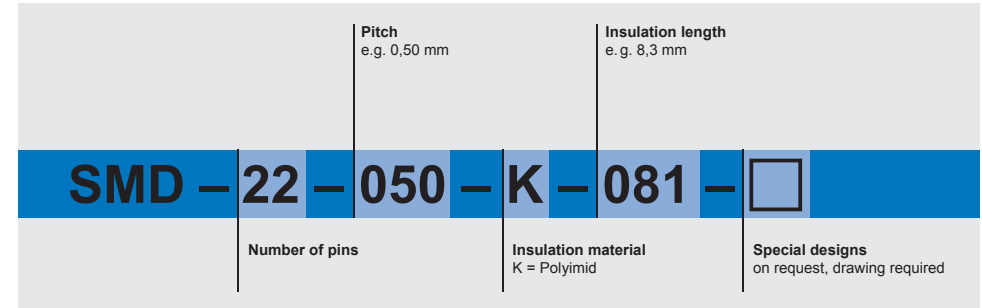
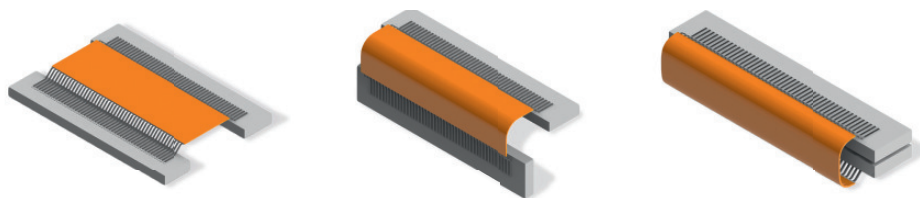
- Variety of possible applications in electronic modules
- High flexibility and bending durability
- Economic alternative compared to e.g. milled and rigid-flexible PCB's
- High temperature resistance
- Automatic assembly by SMD-Pick & Place process
- Reflow soldering (recommended reflow profile DIN EN 61760)
- Subsequent bending of the connected PCB's of up to 180 ° are possible

## CHARACTERISTICS

- Pitch: **0,5 mm**
- Number of pins: 8 to 32
- Bridging length 10,8 mm
- Total length: 15,2 mm
- Application: - 40 °C to + 125 °C
- Current rating: 1A @ 20°C (according DIN EN 60512-5-2)
- Package unity: 1.500 pcs. on tape & reel

Please do not hesitate to ask for our processing instructions for PANTA<sup>®</sup> SMD.

## DESIGN EXAMPLE



## TECHNICAL DATA

Pitch (mm)	0,50
Max. number of pins	8 - 32
Insulation resistance (Ω)	50 <sup>3</sup>
Complanarity (mm)	0,15
Min. bending radius (mm)	2,0
Max. bending cycle	5 x 135°
Conductor material	Cu 100 μm + NiSn
Current rating at 20° (A)	1 A (DIN EN 60512-5-2)
Recommended Reflow Profil	DIN EN 61760
Operation temperature (°C)	-40°C to +125°C

Customer specials on request.

