

PANTA[®] FIX POWER



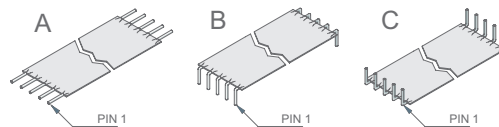
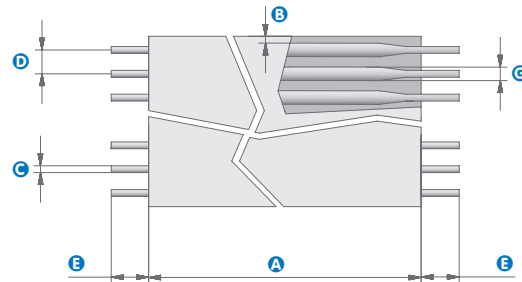
Use the order key to configure your request online.



PANTA[®] FIX POWER JUMPERS are flexible flat conductor connectors, especially for applications with a current rating of 12 amperes. Solid round conductors ensure fast and secure assembly. In the PANTA[®] round-flat-round technology, the copper conductors are rolled flat to a defined geometry in the insulating area, ensuring the highest standards of vibration and bending resistance. The smooth notch-free transition from round to flat guarantees fracture-safe connection points.

BENEFITS

- High vibration and bending resistance
- Reliable and fracture-safe connection
- Ready for installation
- Economizes working time and assembly costs
- Simultaneous soldering of all connection points in the solder bath
- Up to 12 amperes (soldered power jumper)
- Available as THT capable JUMPER
- Can be combined with several connectors



	Pitch e.g. A = 2,54 mm see pitch code	Insulation material e.g. P = Polyester N = Aramid fiber E = PEN K = Polyimide	Termination styles e.g. A = identical ends AB = different see chart
POW – A 05 – N 051 – A – 001			
	Number of pins	Insulation Length from 15-999 mm Special length on request	Special designs on request, drawing required

TECHNICAL DATA

PANTA[®] FIX POWER JUMPER

Order code	F	A	P	N	M	C	K	J
D Pitch (mm)	2,5	2,54	3,5	3,96	5,0	5,08	7,0	7,5
Max. number of pins	15	15	8	8	8	8	8	8
A Length (mm)	25-999 in 0,1 steps; special lengths up to 5000							
B Max. margin (mm)	selectable up to 10							
B Min. margin (mm)	1,0	1,0	1,0	1,0	1,0	1,0	1,0	1,0
C Pin diameter (mm)	0,72	0,72	0,91	0,91	0,91	0,91	0,91	0,91
American Wire Gauge (AWG)	21	21	19	19	19	19	19	19
G Flat conductor width (mm)	2,0	2,0	3,0	3,0	3,0	3,0	3,0	3,0
Flat conductor thickness (µm)	200							
Conductor material	min 2-3 µm tin-plated							
Current rating at 20°C (A)	8	8	12	12	12	12	12	12
Voltage rating (V_{oc})	300							

Customer specials on request.

POWER Jumper - Insulation materials

Insulation	Polyester	Aramid fiber	PEN	Polyimide
Insulation resistance (Ω) (GRD-SIG-GRD)	>10 ¹⁰			
Operation temperature (°C)	-40 ... +105	-40 ... +125	-40 ... +125	-40 ... +125
Soldering temperature (°C/sec)	250/4	260/5	260/5	260/5

Customer specials on request.

PANTA[®] FIX POWER MIT MAS-CON[®] IDC



CHARACTERISTICS

MAS-CON[®] series, Type CEH

- Pitch 3.96 mm, high power
- Number of pins: 2-8
- IDC termination (insulation displacement contact)
- Wire gauge AWG 19
- Solid wires
- Built-in polarization
- Coding with coding pin
- Current rating 6.0 A
- Operating voltage acc. to VDE 0110-1/04.97
- Operating temperature -40°C to 105°C

Please do not hesitate to ask for our processing instructions for Panta[®] FIX POWER with MAS-CON[®] IDC.

HIGH POWER Connector

Pitch (mm)	3,96 HI-POWER
Number of pins	2-8
Type of connection	IDC
American Wire Gauge (AWG)	19
Conductor type	massive
Polarization	integrated
Coding	pins
Current rating (A)	6
Operation voltage	VDE 0110 b / 2,79 Tab. 4
Operation temperature (°C)	-40 bis + 105

MAS-CON[®] series, Type CEP (terminating connector)

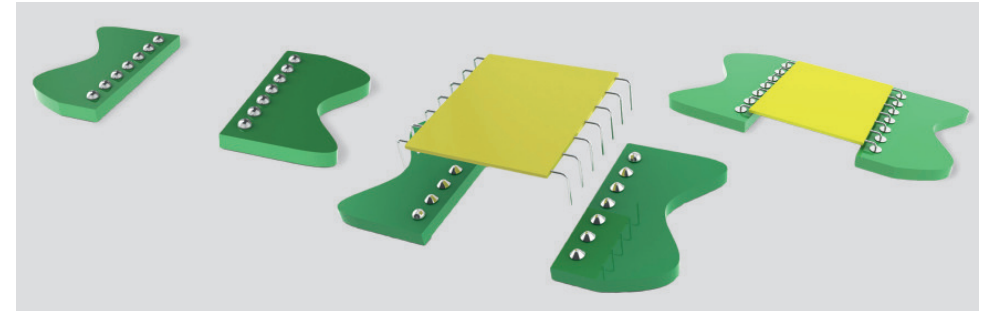
- Pitch 2.54 mm
- Number of pins: 2-15
- IDC termination (insulation displacement contact)
- Wire gauge AWG 21
- Solid wires
- Coding with coding pin
- Current rating 4.0 A
- Operating voltage acc. to VDE 0110-1/04.97
- Operating temperature -40°C to 105°C

PANTA[®] FIX POWER SYSTEM

with insulation displacement connector (IDC)

D Pitch (mm)	2,54	3,96
Number of pins	2-15	2-8
A Length (mm)	25 - 9	99
E PinLength (mm)	2,5 -	10
Termination styles	A,B or C	
B Min. margin (mm)	1,0	1,0
C Pin diameter (mm)	0,72	0,912
American Wire Gauge (AWG)	21	19
G Flat conductor width (mm)	2,0/3,0	
Flat conductor thickness (µm)	200	
Conductor material	tin-plated 2-3 µm	
Current rating at 20°C (A)	4	6
Voltage rating (V _{DC})	300	

PANTA[®] PIP JUMPER PICK AND PLACE & REFLOW-SOLDERING



Jumper for automated assembly processes in standard SMD-reflow soldering.

BENEFITS

- Elimination of manual insertion and selective soldering
- Cheaper alternative to flex-rigid PCB

CHARACTERISTICS

- Developed for use in automated SMD reflow process
- Insulation width between 20 mm and 60 mm (others on request)
- Requires special nozzles
- Qualification for humidity, temperature, voltage resistance, solderability and bending cycles for operating temperatures from -40°C to +125°C
- Delivery in blister on plastic reel
- Pitch 2.54 mm (others on request)

Please do not hesitate to ask for our processing instructions for PANTA[®] PIP JUMPER.

